

QEW CREDIT RIVER IMPROVEMENT PROJECT

Public Information Centre

August 5th, 2021

Question-and-Answer Session: 4:00 P.M. to 6:30 P.M.



Housekeeping

This PIC is being hosted virtually by EDCO through the Project Website.

- The presentation will be available all-day August 5, 2021.

Please watch the pre-recorded presentation on the project website to learn more about the current detailed design, receive updates on the Project and submit questions to the Project Team.

- A Question-and-Answer (Q&A) session will be hosted through the Project Website from 4:00 p.m. to 6:30 p.m. August 5, 2021.
- Instructions on how to register for the Q&A session are available on the Project Website.
- The Q&A session will be recorded.

Comments and feedback received during the Public Information Centre will be maintained on file for use during the Project and will become part of the public record.



Introductions

EDCO
EllisDon & Coco JV

Communications Team

- Cameron Coleman
- Melanie Abdi

Environmental Team

- Emma Docherty
- Sonia Rankin
- Nicolas Brzezinski

Design Team

Traffic Team

Construction Team

THE CLIENT



PROJECT CO



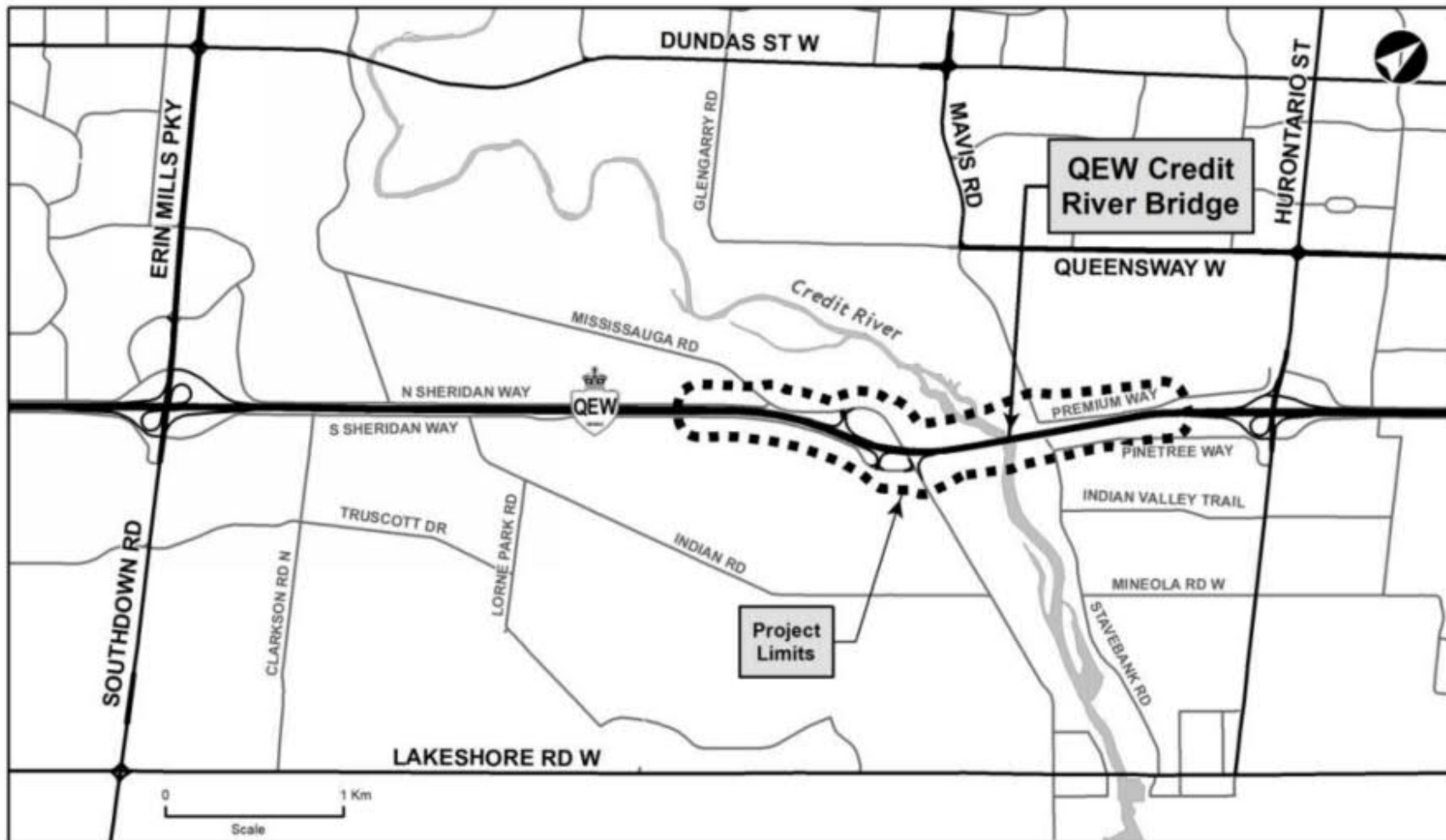
CONSTRUCTION



DESIGN



Project Area



Purpose of the PIC

Obtain feedback and comments on EDCO design of:

- Rehabilitation of the existing QEW Credit River Bridge
- Active Transportation crossing of the Credit River
- Landscape Design
- Commemorative Strategy
- Detail design refinements
- Traffic staging

This PIC will also present:

- Project Overview and Timelines
- Next Steps



PIC Materials

The following PIC information is available through the Project Website:

- PIC Pre-recorded Presentation
- PIC Presentation Slides PDF (downloadable)
- PIC comment form

Q&A session will be hosted via the Project Website from 4:00 p.m. to 6:30 p.m.

To register for the Q&A session, submit comments and question visit:

<https://gewcreditriver.ca>.

We also encourage you to complete a PIC Comment Form available on the website or e-mail your comments directly to the Project Team via:

info@gewcreditriver.ca.



Project Overview

The Project includes several components.

Construction of Project components documented in Design and Construction Report #2 (DCR 2) has been initiated, including work associated with:

- New QEW Credit River Bridge directly to the north of the existing bridge and widening of the highway
- Reconfiguration of the Mississauga Road interchange including replacement of the Mississauga Road overpass
- Realignment of local roads including Premium Way and South Sheridan Way
- New active transportation crossing of the QEW
- Support facilities and features including utility relocations, drainage, culvert, and stormwater management improvements, illumination, noise walls, and Advanced Traffic Management System



Isolating the work area for the new Credit River Bridge



Project Overview

Since DCR 2, EDCO has advanced design for other components of the Project including:

- Rehabilitation of the Existing QEW Credit River Bridge
- Active transportation crossing of the Credit River (east-west crossing)
- Landscape Design


Initial design details regarding a Commemorative Strategy and aesthetic treatments to be implemented on the north-south active transportation crossing have also been developed.

This study is following the requirements of a Group 'B' project under the *MTO Class Environmental Assessment for Provincial Transportation Facilities (2000) (MTO Class EA)*.

Comments and feedback on the design being presented at this PIC, are being collected to assist EDCO and MTO to meet the requirements of the MTO Class Environmental Assessment (EA).



Project Background and Timeline



2013	Group B Preliminary Design and Class EA Completed
2017 – 2018	Design and consultation continued
2019	Design Build Finance Model selected
July 2020	Design and Construction Report (DCR) #1
Fall 2020	EDCO selected to Design Build Finance Project
January 2021	DCR #2
March 2021	Environmental Clearance (DCR #2)
April 2021	Construction Begins
August 2021	Public Information Centre (PIC)
Fall 2021	DCR #3
Fall / Winter 2021	Environmental Clearance (DCR #3)



We are here



Key Environmental Constraints

- Cultural Heritage
 - QEW Bridge
 - QEW Mainline
- Fish and Fish Habitat
 - Credit River, Creeks and Tributaries
- Terrestrial Ecosystem
 - Species at Risk Habitat
 - Significant features, habitats and Species
 - Sensitive species
- Socio Economic and Landscaping
 - Recreation
 - Site Restoration



Fisheries constraints include Credit River, Stavebank Creek and Kenollie Creek



Environmental Commitment

EDCO is committed to protecting the environment during design and construction of the Project and has developed and implemented several Environmental Management Plans which outline environmental protection measures and monitoring programs including:

- Protection of birds, bats and bat habitat during vegetation clearing and exclusionary measures to prevent birds nesting on the existing structure
- Protection of fish and aquatic species through work area isolation, erosion and sediment control measures and fish relocations
- Protection of Butternut species throughout the work
- Employing archaeological monitors during works on the existing QEW
- Monitoring to ensure no damage to heritage attributes of the existing bridge
- Air, noise and vibration monitoring and mitigation measures
- Monitoring and sampling surface water and groundwater quality within the Project limits to ensure no impacts
- Management of excess and contaminated materials



Aquatic biologists working to capture and relocate fish

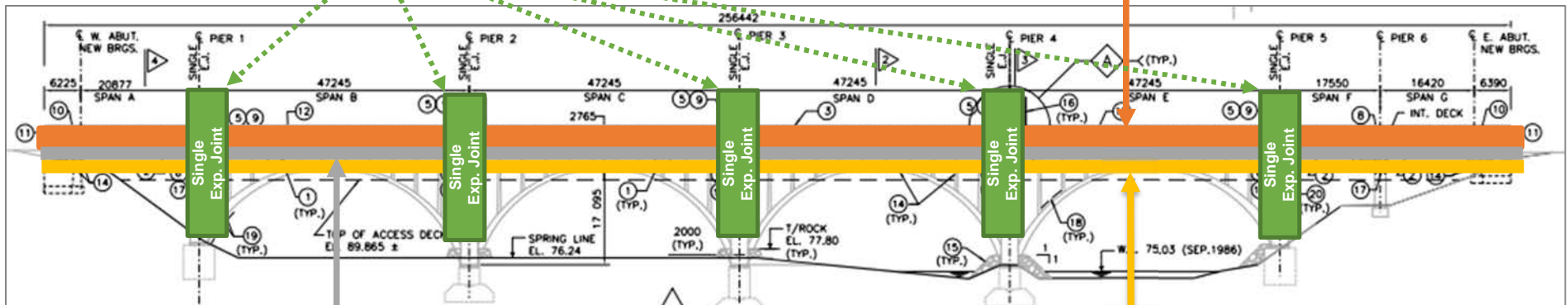


Rehabilitation of Credit River Bridge

Major elements of the rehabilitation work includes:

Replacement of the existing double joints with single joint expansion joints and removal of the abutment joints

Installation of transparent noise barrier

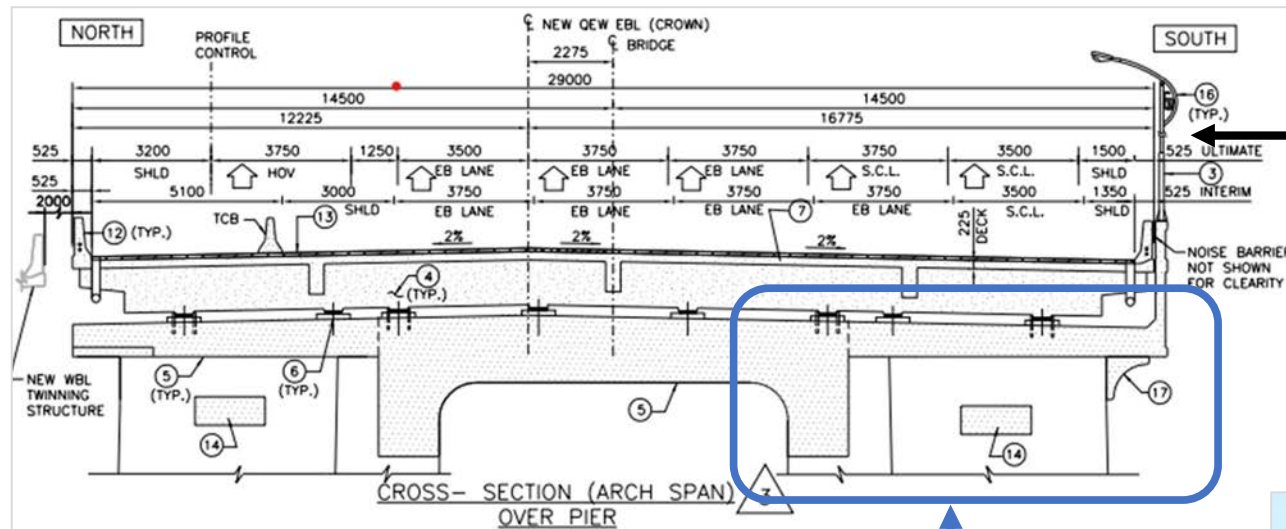


Construction of new concrete barrier walls

Removal and replacement of the deck and floor beams in the main and approach spans of the bridge



Rehabilitation of Credit River Bridge



ER lights will be re-instated on south side of the bridge along the eastbound lanes

Rehabilitation of the concrete substructure including the arch ribs, spandrel columns, piers, wingwalls, and abutment



Existing ER light standards to be re-instated



Rehabilitation of Credit River Bridge

The QEW Credit River Bridge is a Provincial Heritage Property of Provincial Significance which must be managed in accordance with the Standards and Guidelines for Conservation of Provincial Heritage Properties issued under section 25.2 of the Ontario Heritage Act.

A Heritage Attribute Monitoring Plan has been prepared to guide the design and construction phases for the rehabilitation of the QEW Bridge.

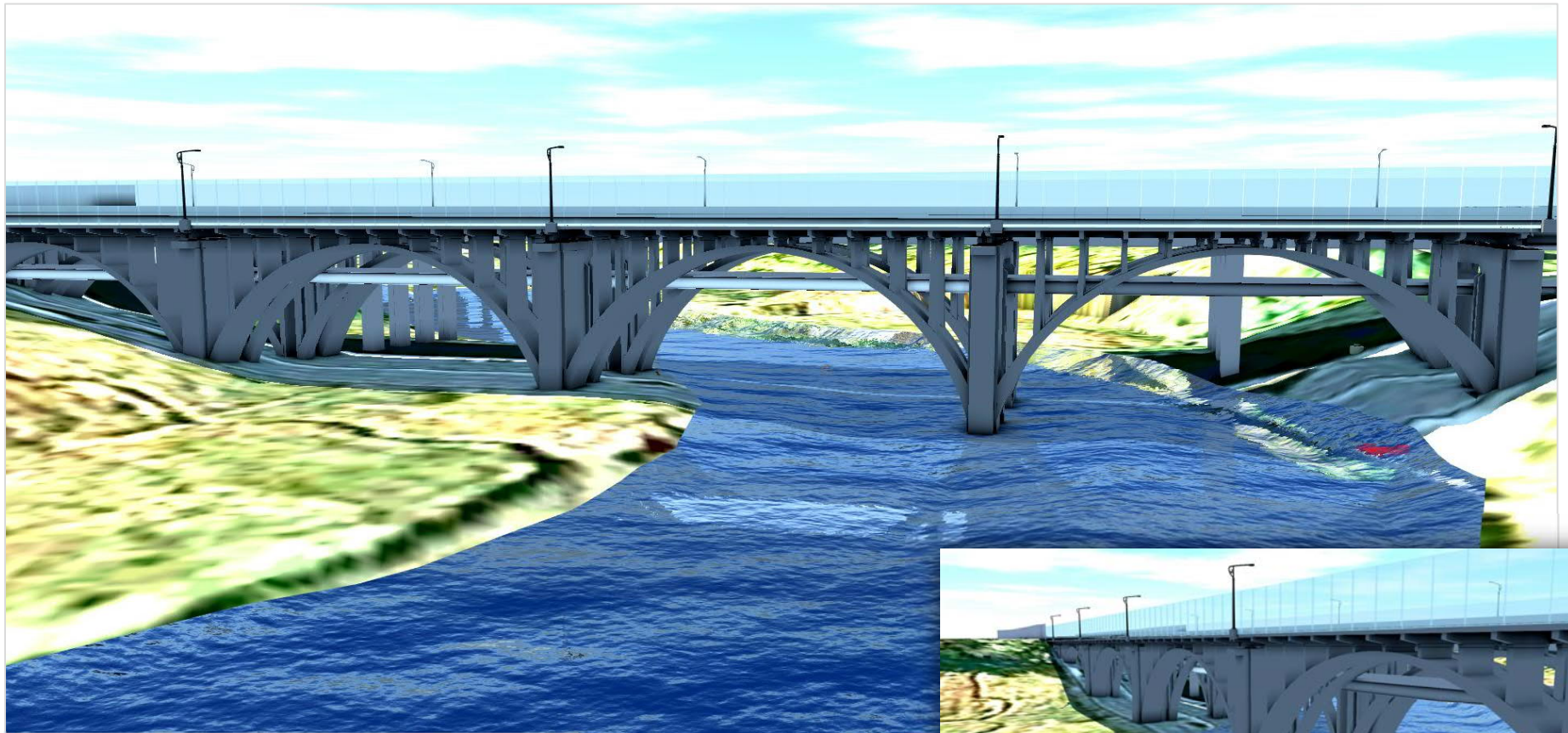
Rehabilitation work on the existing bridge will be monitored by a heritage specialist.



Existing QEW Bridge crossing the Credit River



QEW Credit River Bridges



View of the Existing QEW Credit River Bridge to the South

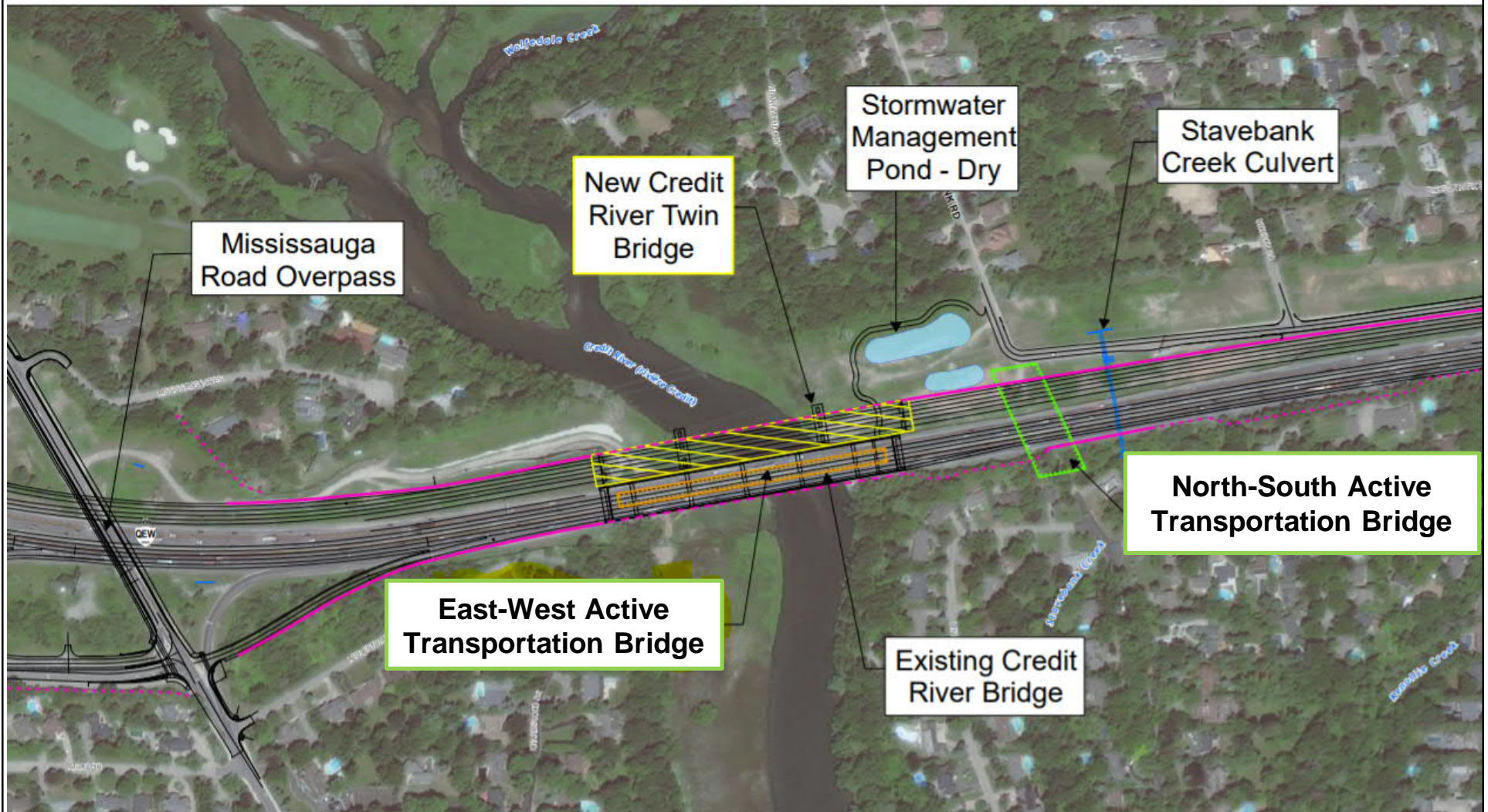


View of the Existing QEW Credit River Bridge to the East



Active Transportation crossing of the Credit River (East-West)

EDCO
EllisDon & Coco JV



Active Transportation crossing of the Credit River (East-West)

EDCO
EllisDon & Coco JV



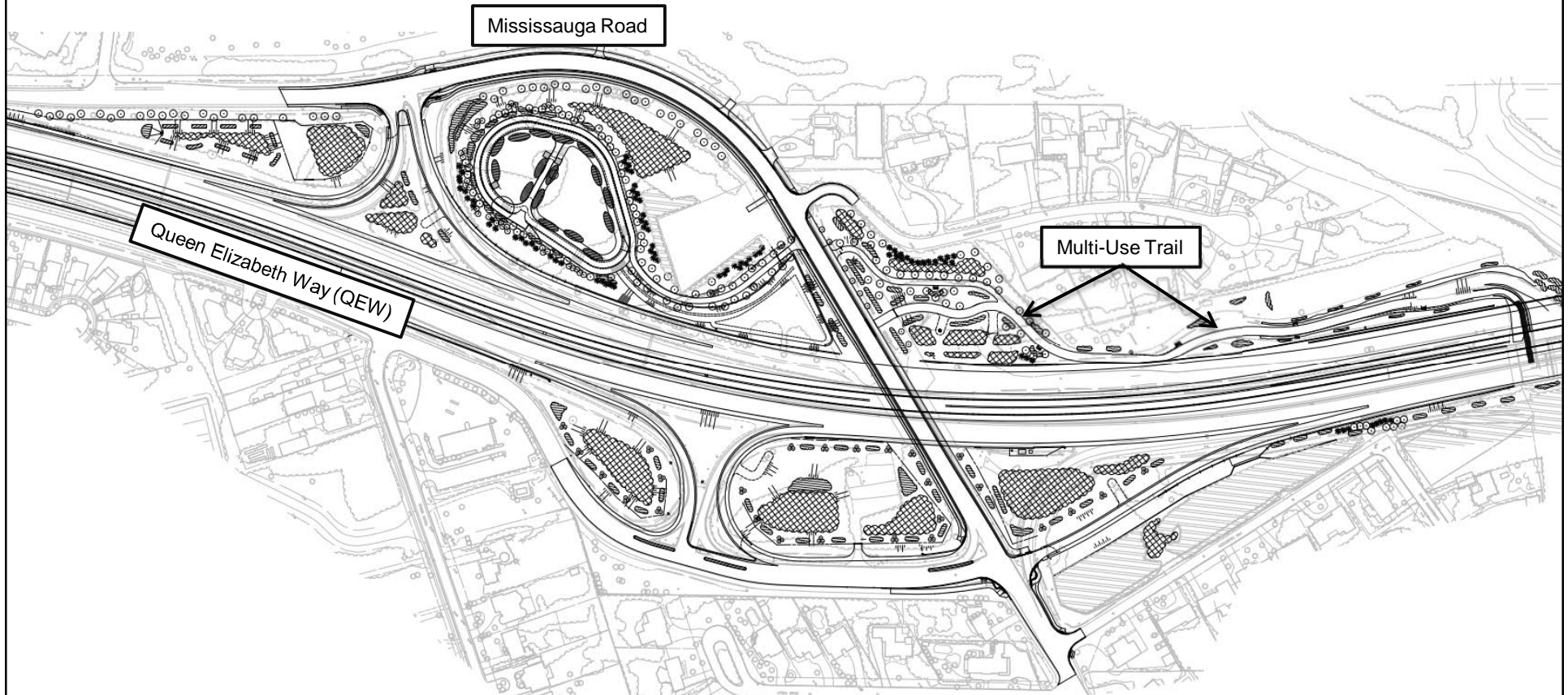
Landscape Design

Key Elements of the Landscape design include:

- Field Investigations Requirements
 - Surveys to confirm existing conditions
- Environmental Protection Requirements
 - Environmentally Sensitive Areas
- Vegetation and Site Restoration
 - Sensitive natural areas
 - Post-construction restoration
- Landscape Design & Planning
 - Planting and landscape architecture
- Wildlife Plan
 - Wildlife protection during construction
- Monitoring
 - During and post-construction



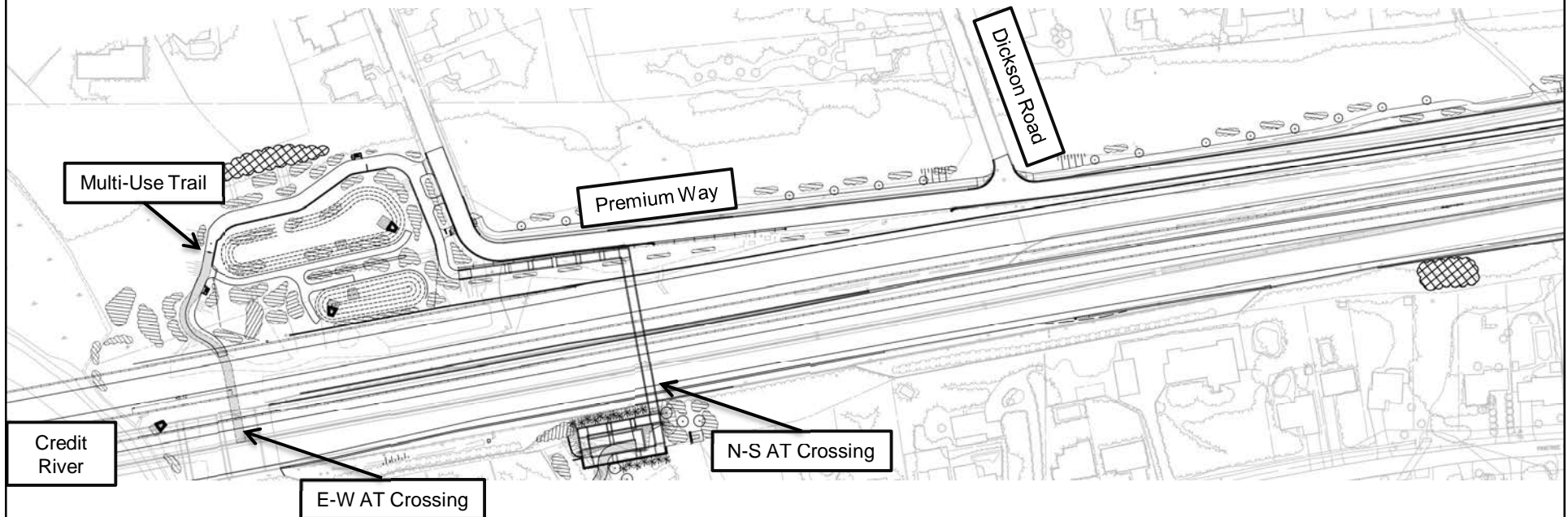
Landscape Design



- Mississauga Road Interchange
- Multi-use Trail at Mississauga Road
- Trail connection to Active Transportation bridge over the Credit River



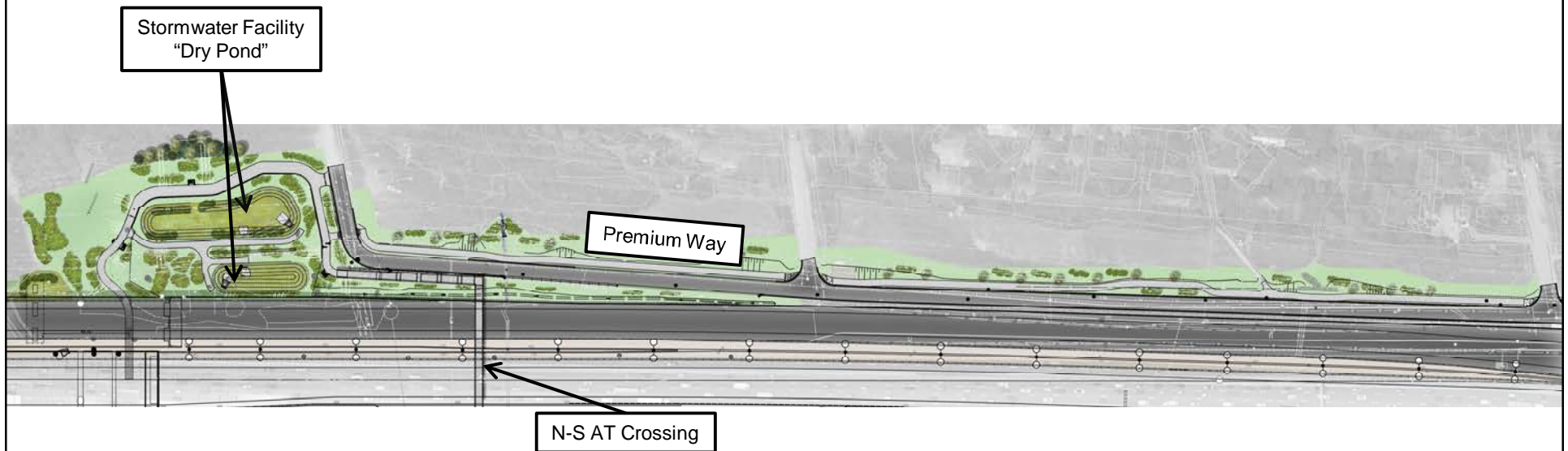
Landscape Design



- Dry Pond for Stormwater Management at Stavebank Road
- Multi-use Trail at Stavebank Road and Premium Way
- Trail connection to Active Transportation bridge over the Credit River & QEW
- Culvert Replacement Plantings
- Credit River Valley restoration



Landscape Design



- Multi-use trail and plantings around the stormwater management pond
- Trail connections to the QEW and Credit River pedestrian and cycling bridges
- Commemorative displays integrated into the trail and landscaping plan



Commemorative Strategy

The Commemorative Strategy was initially developed through community workshops in 2019.

Key items discussed within the workshops included recommendations regarding:

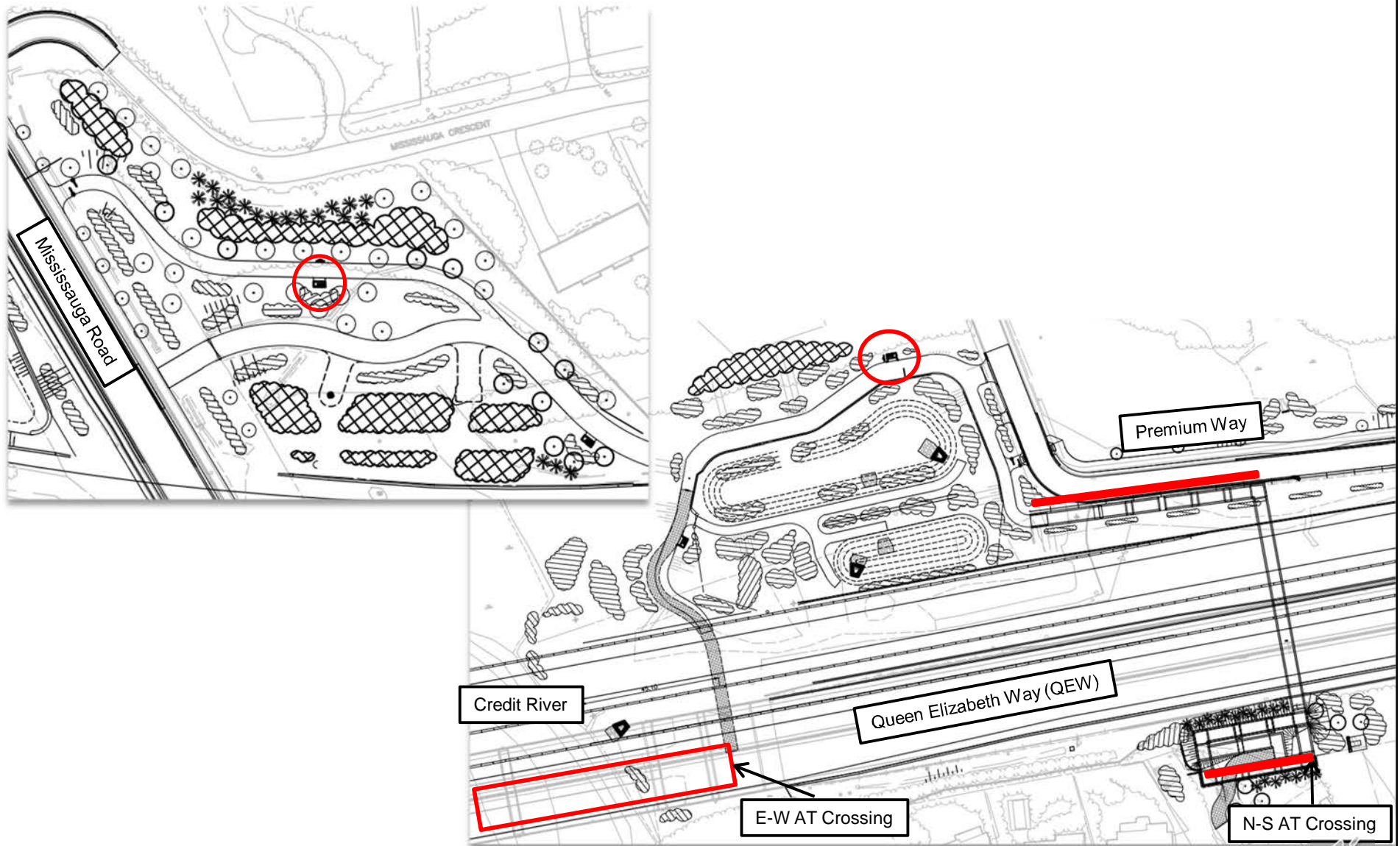
- Commemoration Topics: Archaeology, Indigenous History, Bridge Construction and QEW history, and Natural Heritage within the Credit River
- Commemoration Locations: trailhead plazas, the active transportation crossing of the QEW and along the trail on the east bank of the Credit River

Commemorative information and imagery will be displayed through storyboards similar to the examples below.



Commemorative Strategy Locations

EDCO
EllisDon & Coco JV



N-S Active Transportation Crossing

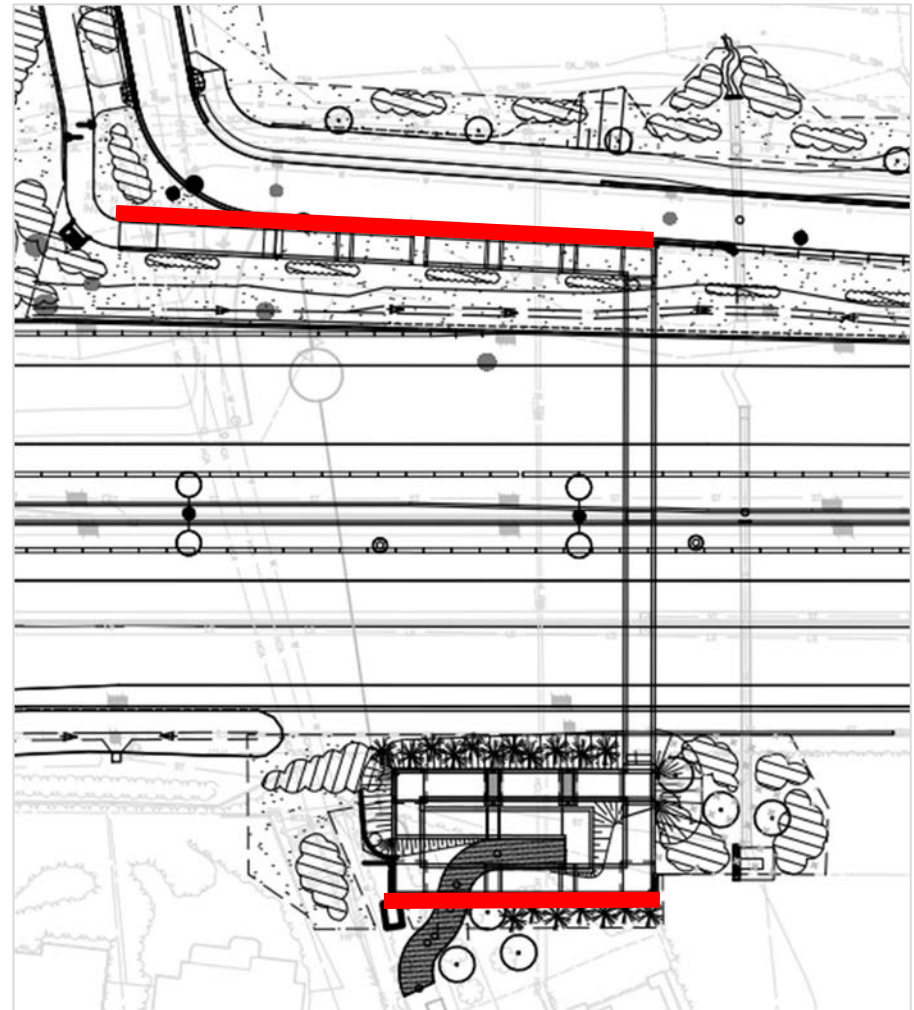
Aesthetic Treatments will be designed for the Active Transportation bridge crossing over the QEW.

Locations

- Retaining wall at Premium Way
- Ramp Elements on Stavebank

Potential Concepts

- Active Transportation image/icon
- Natural Heritage theme



Detailed Design Refinements

The design for the culvert at Stavebank Creek (C6) has been refined since DCR #2 was published in January 2021.



Upstream overview (facing south)
between QEW and Premium Way.



Upstream overview (facing
north) from Premium Way.



QEW Culvert outlet, facing north to culvert.

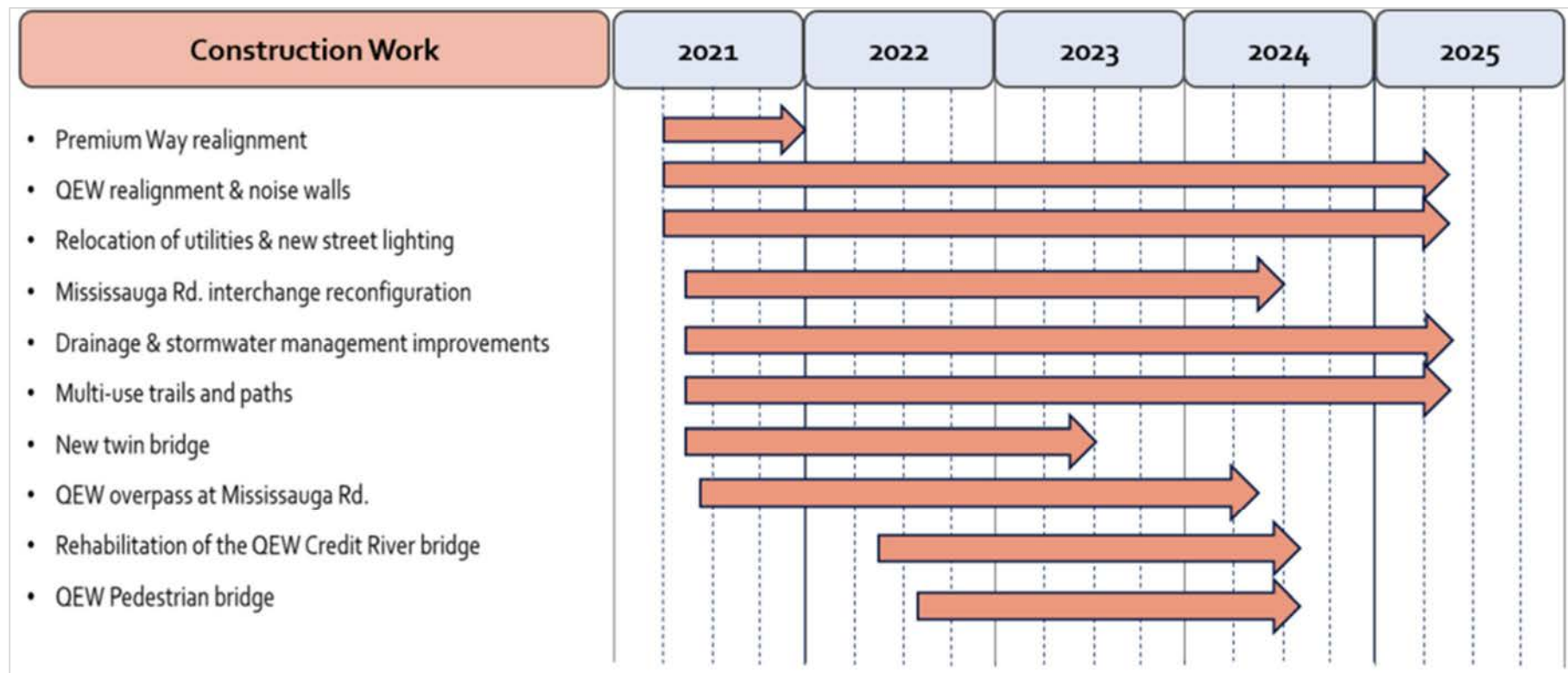
Refinements necessary to accommodate the TNPI criteria for their pipeline along the north side of Premium Way.

The design changes for C6 result in shorter culverts and more open channel than the previous design.

EDCO's design incorporates natural channel design principles and takes into consideration drainage, fluvial and fisheries elements to minimize impacts to fish and fish habitat.



Construction Schedule



Visit the Project Website: gewcreditriver.ca to sign up and receive construction updates.



Traffic Staging

Temporary traffic restrictions are required to allow for work to occur safely.

Temporary traffic restrictions can also allow for work to be completed quicker resulting in less overall impact.

Current traffic restrictions include:

- Premium Way long term closure – Summer 2021 to Fall 2021
 - Direct access to Premium Way and a few neighbouring streets/properties will be temporarily closed to local traffic.
 - Access will be provided via either Stavebank Road or Harborn Road, depending on the construction stage.
- QEW westbound on-ramp at Mississauga Road closure – Summer 2021 to Fall 2023
 - On-ramp traffic will be detoured to the Erin Mills/QEW interchange (N-W on-ramp) via North Sheridan Way.
 - The detour will be signed during the closure of the on-ramp to QEW Westbound.
- Mississauga Road, North and South Sheridan Way – Summer 2021 to mid-Fall 2021
 - Mississauga Road reduced to 1 lane in each direction.
 - All intersection movements at Mississauga Road and South Sheridan Way will be maintained.



Traffic Staging

Future traffic restrictions will include:

- Temporary closure of Mississauga Crescent to Mississauga Road southbound traffic (northbound right-in right-out only).
- QEW eastbound on-ramp from Mississauga Road closed – QEW eastbound access via South Sheridan Way.
- Night time (10 pm to 6 am) lane closures of the QEW and the on and off ramps at Mississauga Road.

Visit the Project Website: gewcreditriver.ca to sign up for advance notice of these and other traffic restrictions and learn more about a temporary traffic impacts.

We apologize in advance for any inconvenience or delays these traffic impacts may cause during construction on this important infrastructure project.



Next Steps

Following this PIC we will:

- Respond to comments received during the PIC period (Aug 5 – Sept 2)
- Consider the comments and questions as the design is being finalized
- On-going consultation and engagement with Indigenous Communities and key stakeholders
- Obtain the necessary environmental permits and approvals to undertake the works
- Prepare Design and Construction Report #3 (DCR #3) that will be made available for a 30-day public and agency review period
 - Notification of the review period for DCR #3 will be published in local newspapers, posted on the project website and sent to the project contact list
- Upon completion of the review period for DCR #3 and receipt of environmental approvals, environmental clearance will be issued



Questions and Comments

Your input is an important part of this process.

Submit a Question or Comment and stay involved and receive updates as the study progresses.

Comments on the information presented at this PIC are requested by:
September 2, 2021

Please visit our website or contact us:

Project Website



qewcreditriver.ca

Project Email



info@qewcreditriver.ca

Project Phone Number



1-866-624-9114



Thank you



We appreciate the time you have taken to learn more about the QEW Credit River Improvement Project.

Comments and information regarding this study are being collected to assist EDCO in meeting the requirements of the *Ontario Environmental Assessment Act*. This material will be maintained on file for the use of this study and may be included in study documentation.

Information collected will be used in accordance with the *Freedom of Information and Protection of Privacy Act*. With the exception of personal information, all comments will become part of the public record.